



@drkian

Words from our Medical Director

In this edition, we're thrilled to look back on the highlights of our summer and revisit the cutting-edge innovations that continue to shape the future of aesthetics.

WHAT HAS MADE YOUR SUMMER MEMORABLE?

The highlight for me was undoubtedly The Aesthetic Show at The Wynn, Las Vegas. It was a true pleasure to connect with so many of you, and the energy at the event was nothing short of inspiring. This gathering reaffirmed our collective commitment to pushing the boundaries of patient care and fostering meaningful discussions around innovations in aesthetics.

LOOKING AHEAD TO THE REST OF THE SEASON

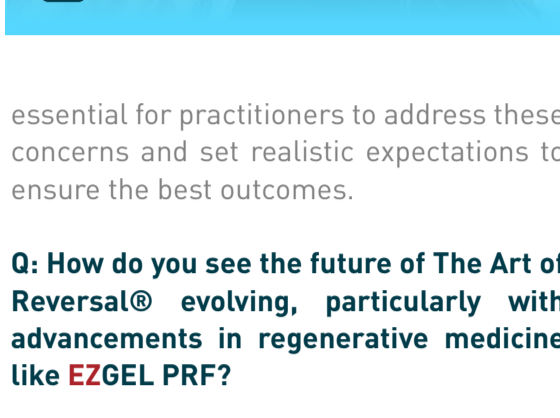
We're excited to continue bringing you the latest tips, techniques, and developments to help you deliver exceptional care. As we transition into fall, let's ensure our practices evolve and continue to provide the highest quality care to our patients.

Kian Karimi MD, FACS

SPOTLIGHT



Interview with Amy Lynn, RN, CANS: The Art of Reversal®



@amybirksrn

Q: How would you define The Art of Reversal®?

Amy Lynn, RN, CANS: The Art of Reversal® is an innovative injectable procedure that blends both science and artistry to address less-than-ideal outcomes from hyaluronic acid dermal fillers. Its primary objective is to enhance tissue integrity and support the reversal process by using the patient's own albumin-rich Platelet-Rich Fibrin (PRF). This technique accelerates tissue repair, boosts hydration, and restores lost volume.

Q: In what ways does EZGEL PRF play an important role in The Art of Reversal®?

Amy Lynn, RN, CANS: EZGEL PRF is crucial in The Art of Reversal® because it enhances tissue regeneration and improves tissue perfusion right after the administration of reversal agents like Hylenex. It accelerates the healing of the microchannels created during the reversal process and helps replenish lost volume. This reduction in immediate and progressive skin laxity and deflation at the reversal sites significantly boosts patient satisfaction. In my practice at GloDerma, I've observed a notable decrease in post-migratory concerns when re-treating with hyaluronic acid compared to previous reversal protocols.

Q: What key factors should practitioners consider when incorporating The Art of Reversal® and EZGEL PRF into their treatments?

Amy Lynn, RN, CANS: With the increasing popularity of aesthetic injectable procedures, it is important for aesthetic practitioners to develop strong assessment skills during the evaluation with their patients. Many times, patients do not realize that these changes have occurred due to lingering filler, being "over corrected", migration and natural aging process. Patients are also not always willing to want to have a fresh canvas after having certain injectable procedures related to the fear of how they may look post reversal. It's

essential for practitioners to address these concerns and set realistic expectations to ensure the best outcomes.

Q: How do you see the future of The Art of Reversal® evolving, particularly with advancements in regenerative medicine like EZGEL PRF?

Amy Lynn, RN, CANS: The future of The Art of Reversal® is promising, especially with advancements in regenerative medicine like EZGEL PRF. As our understanding of HA fillers improves and they are found to last longer than previously thought, patient education becomes crucial. By integrating regenerative modalities like EZGEL PRF, we can offer more precise and individualized recommendations for reversing HA fillers, aiming to repair, regenerate, and revitalize tissue rather than just providing temporary improvements. This evolution allows us to deliver better, long-term results for our patients.

Q: What upcoming talks or events will you be a part of to discuss this topic further?

Amy Lynn, RN, CANS: I'm excited to continue my research and refine The Art of Reversal® protocols with my patients, and collaborate with esteemed colleagues like Dr. Kian Karimi and Dr. Anil Rajani. I'll be speaking at several upcoming events, including:

- Aesthetic Next 6.0 in Dallas from September 5-8.
Canadian Expo from October 17-20, where I'll teach a Regenerative Master Class and present on The Art of Reversal®.
Glo Academy Advanced Biofillers and Regenerative Medicine Master Class.
LA-MCA 2025 from March 13-16.
Various online courses and lectures.

AMY LYNN, RN, CANS
Board Certified Aesthetic Nurse Specialist |
Founder/CEO @gloDerma @mygloacademy
gloDerma.com | Glo Studio | Trainer/Speaker
@gainbygalderma.usa

PRODUCT TIPS



Essential Pre and Post-Treatment Care for Optimal Results

WHY DOES IT MATTER?

Proper pre and post-treatment care is key to unlocking the full potential of EZGEL and EZPRF treatments. When you take the time to provide clear instructions, you're not just enhancing results you're also ensuring your patients feel informed and supported, leading to the best possible outcomes.

Pre-Treatment Care:

Before treatment, remind patients to stay hydrated, avoid medications like ibuprofen or aspirin, and skip alcohol. They should also avoid high-fat foods and smoking, as these can interfere with recovery.

Post-Treatment Care:

After treatment, it's important that patients avoid touching their face and applying ice directly. They should consult their healthcare provider before taking any medications. Managing swelling correctly is crucial for a smooth recovery.

Choosing the Best Device for Your Practice: The EZPRF and EZGEL Advantage



In the rapidly evolving world of medical aesthetics, choosing the right device for your practice is essential. The right choice can enhance the quality of your services, expand your client base, and keep you ahead of the competition. The EZGEL and EZPRF systems stand out as the perfect addition to your practice, addressing all the key factors that clinicians and operational experts need to consider.

STAY COMPETITIVE

In today's competitive market, it's important to offer services that differentiate your practice from others. Chances are, neighboring medspas may already be offering similar natural solutions. By integrating EZGEL and EZPRF, you ensure that your practice remains a leader in the field, providing the latest in autologous treatments that are highly sought after by patients.

IDENTIFY YOUR PRACTICE'S GAPS

Before considering the wide selection of available devices, it's essential to evaluate your practice's current offerings. Are there specific services your patients often ask for that you currently don't provide? The EZGEL and EZPRF treatments can effectively fill these gaps by providing an all-natural alternative to traditional fillers, aligning with the growing demand for more natural aesthetic solutions. As trends shift away from synthetic fillers, EZGEL and EZPRF treatments help your practice stay ahead of the curve, offering what patients are increasingly seeking.

LOW RISK, HIGH REWARD

One of the significant advantages of the EZGEL and EZPRF treatments is their low risk of complications due to their natural, autologous nature. Since the product is derived from the patient's own blood, it significantly reduces the risk of adverse reactions. This not only enhances patient safety but also boosts patient confidence in the treatments offered. Moreover, with Dr. Karimi, our highly respected Medical Director, offering support, your practice is backed by expert guidance, further guaranteeing the safety and effectiveness of the treatments.

COST-EFFECTIVE INVESTMENT

The EZGEL and EZPRF treatments are not only effective but also cost-efficient. Compared to traditional fillers, this treatment is less expensive, allowing your practice to offer competitive pricing without sacrificing quality. This cost-effectiveness makes it easier to expand your clientele, attracting patients who are looking for natural solutions at an affordable price.

PARTNER WITH THE BEST

When you choose Cosmo and EZPRF, you're partnering with Cosmo, a registered and trusted company. This guarantees your practice is fully compliant with legal and insurance requirements, providing peace of mind. Furthermore, CosmoFrance offers comprehensive training, ongoing support, and robust warranty options, protecting your investment and equipping your team to deliver safer, more effective treatments, ultimately leading to happier patients.

Upgrade your patient treatments with EZPRF and EZGEL! START OFFERING THE ULTIMATE IN ALL-NATURAL SOLUTIONS TODAY!

START NOW

UPCOMING EVENTS

Looking for the latest and greatest in aesthetic advancements? Mark your calendars and join us at one of our exclusive upcoming events!

Webinar: PRF Applications in Surgery: The Comprehensive Webinar Guide. Hosted by Kian Karimi MD, FACS. Wednesday, September 25th, 8:00 AM PST - 11:00 AM EST. REGISTER NOW

Aesthetic Next 6.0: Leading the Way in Regenerative Aesthetics: ezGEL. Hosted by Anil Rajani, MD. Thursday, September 5th, 11:15 AM to 12:15 PM. REGISTER NOW

Clinical Workshop: Discover the Art of Reversal® with ezGEL PRF. Hosted by Amy Lynn, RN, CANS. Thursday, September 5th, 4:15 PM to 4:45 PM. REGISTER NOW

ISPAN: International Society of Plastic and Aesthetic Nurses. SEP 25-29 | SAN DIEGO, CA | TABLE #T18. REGISTER NOW

International Academy of Facial Aesthetics. NOV 25-29 | MIAMI, FL. REGISTER NOW

Stay tuned! A CosmoFrance podcast is coming soon!

LET'S STAY CONNECTED!

Follow us for more information and techniques on ezPRF/ezGEL, DermaSculpt, and CosmoPen, to stay up-to-date on the latest happenings!

CONTACT US

contact@cosmoFrance.net